



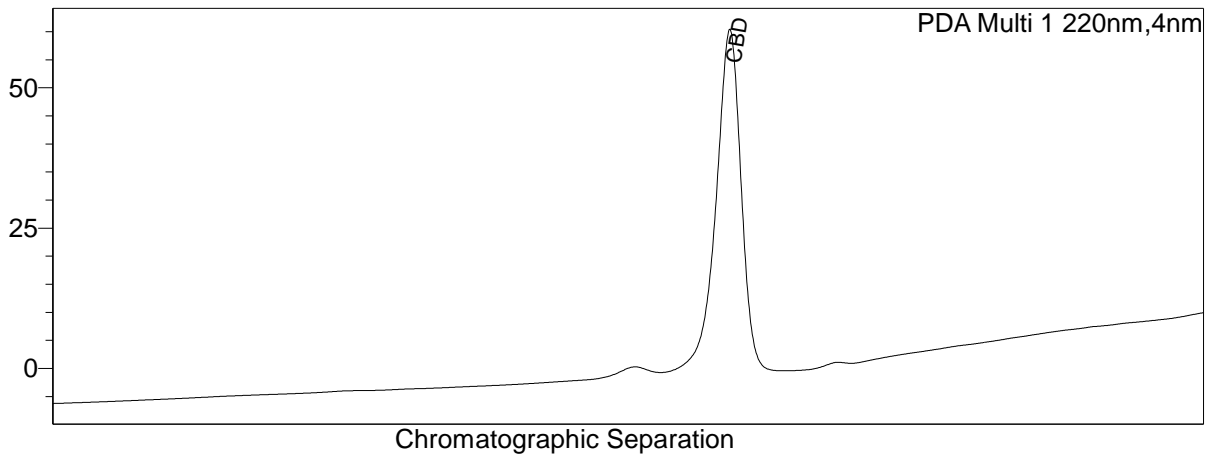
### <Sample Information>

System Administrator  
 Sample Name : Native Hemp Gummy  
 Sample ID : 0122-182  
 Data Filename : 200116\_1222020\_002.lcd  
 Method Filename : QC Concentrate -190702 Mod.lcm  
 Batch Filename : 200116.lcb  
 Vial # : 1-82  
 Injection Volume : 10 uL  
 Sample Amount : 890 mg  
 Extraction Vol. : mL  
 Dilution Factor :  
 Date Acquired : 1/22/2020 3:15:22 PM  
 Date Processed : 1/22/2020 3:32:25 PM

Sample Type : Unknown  
 Acquired by : System Administrator  
 Processed by : System Administrator

### <Chromatogram>

mAU



### <Quantitative Results>

PDA				
ID#	Name	Dry weight %	Conc.	Unit
1	CBDV	0.00	--	mg/g
2	THCV	0.00	--	mg/g
3	CBD	1.72	17.158	mg/g
4	CBG	0.00	--	mg/g
5	CBDA	0.00	--	mg/g
6	CBGA	0.00	--	mg/g
7	CBN	0.00	--	mg/g
8	d9-THC	0.00	--	mg/g
9	d8-THC	0.00	--	mg/g
10	CBC	0.00	--	mg/g
11	THCA-A	0.00	--	mg/g

Total THC	0.00%
Total CBD	1.72%

Total Potency calculation:  
 17.2mg CBD/890mg gummy  
 (2.5/.89) 17.2 = 48mg/gummy

Total CBD Potency =  
 CBD Conc + .877\* CBDA Conc